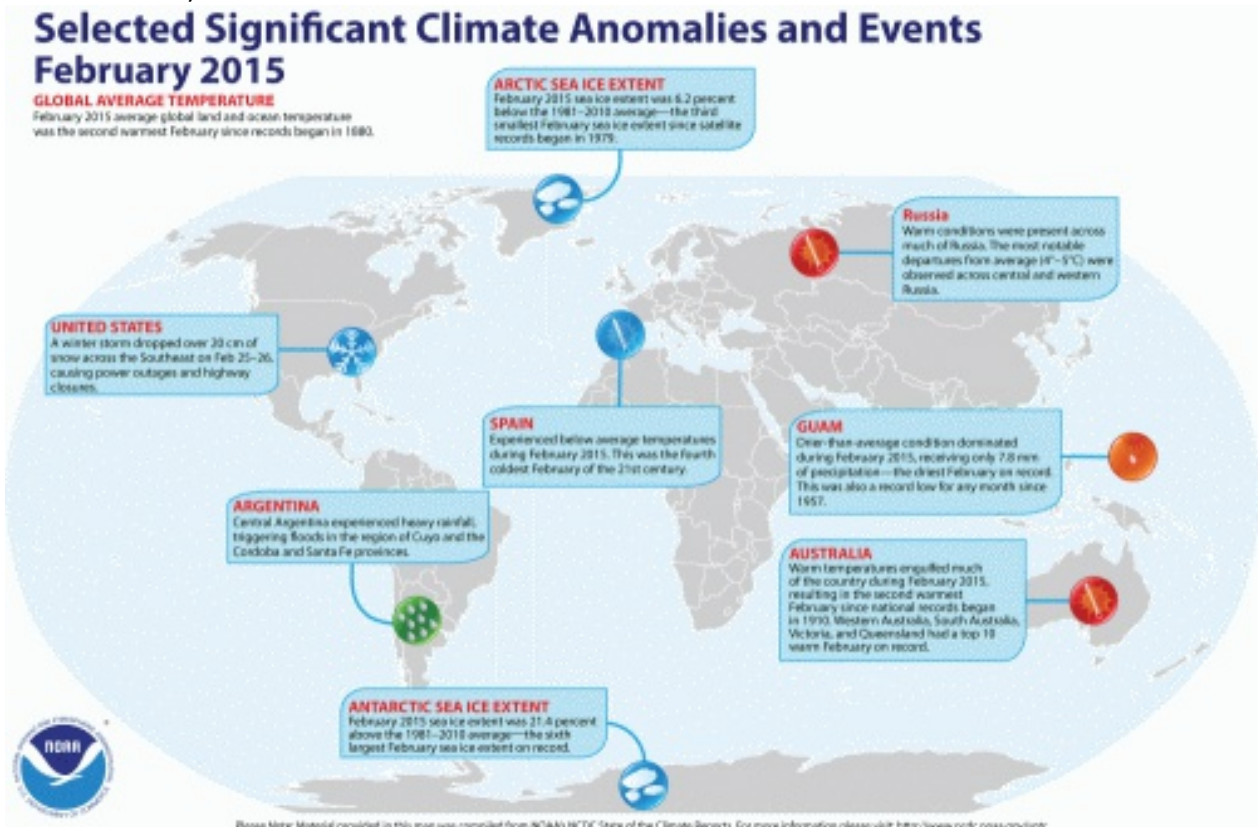


# Selected significant climate anomalies and events February 2015

March 29th, 2015



# Selected Significant Climate Events February 2015

## GLOBAL AVERAGE TEMPERATURE

February 2015 average global land and ocean temperature was the second warmest February since records began in 1880.

### UNITED STATES

A winter storm dropped over 20 cm of snow across the Southeast on Feb 25–26, causing power outages and highway closures.



### ARGENTINA

Central Argentina experienced heavy rain triggering floods in the region of Cuyo and Cordoba and Santa Fe provinces.



**Source: [www.ncdc.noaa.gov/sotc](http://www.ncdc.noaa.gov/sotc)**